

Model CV Check Valve



Product Description

- Model CV check valve is used on the piping of liquid, suction gas or hot air on the freezing, cold storage and air conditioner units.
- The valve seat and seals of Model CV check valve have excellent sealing

- performance.
- For Model CV check valve, both threaded and welded connections are available.

Features

- Ensure one flow direction and avoid reversal
- With the built-in damper and could be mounted on the piping with pressure pulsation.
- Prevent refrigerant back flow from high temperature evaporator to low temperature

- evaporator.
- Applicable to the refrigeration unit in parallel with compressor.
- Both direct flow type and right-angle type are available.

Technical Parameters

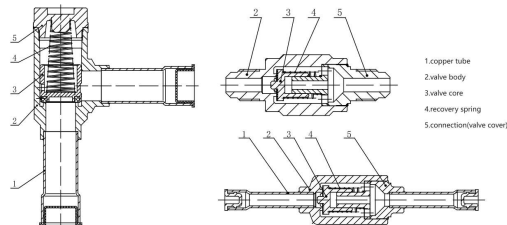
Applicable Refrigerant:	HCFC or HFC(Customer specified)
Applicable Medium Temperature:	-50°C ~ +140°C
MAX Working Pressure	46bar
Maximum Test Pressure	60bar

Model Selection

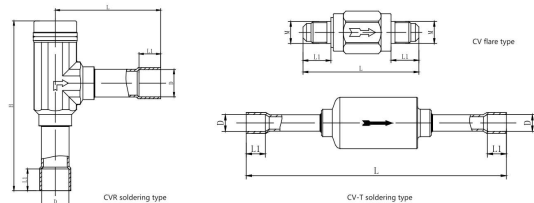
Model	Type	Specs		ID (mm)	Kv(m ³ /h)
		Flare	Welded		
CV-6	Straight-through type	1/4 SAE	/	4.8	0.56
CV-6T	Straight-through type	/	1/4 ODF	4.8	0.56
CV-10	Straight-through type	3/8 SAE	/	8	1.43
CV-10GT	Straight-through type	/	3/8 ODF	8	1.43
CV-12	Straight-through type	1/2 SAE	/	10	2.05
CV-12T	Straight-through type	/	1/2 ODF	10	2.05
CV-16	Straight-through type	5/8 SAE	/	13	3.60
CV-16T	Straight-through type	/	5/8 ODF	13	3.60
CV-19	Straight-through type	3/4 SAE	/	16	5.50
CV-19T	Straight-through type	/	3/4 ODF	16	5.50
CVR-22	Right angle type	/	7/8 ODF	19	8.50
CVRH-28	Right angle type	/	1-1/8 ODF	26	19.0
CVRH-35	Right angle type	/	1-3/8 ODF	31	29.0
CVRH-42	Right angle type	/	1-5/8 ODF	31	30.0

1) Kv value: When the pressure differential is 100kPa, the flowrate at m³/h water in density 1 t/m³ flows through the solenoid valve.

Structure



Overall Dimension



Model	Overall Dimension				
	L	M	L1	S	
CV-6	58	7/16-20UNF	14	19	
CV-10	62	5/8-18UNF	16	21	
CV-12	68	3/4-16UNF	18	24	
CV-16	78	7/8-14UNF	21	27	
CV-19	90	1-1/16-14UNF	24	32	
	L	D	L		
CV-6T	95	φ6.5 ⁽¹⁾⁽²⁾	7		
CV-10GT	109	φ10.5 ⁽¹⁾⁽²⁾	8		
CV-12T	119	φ12.8 ⁽¹⁾⁽²⁾	10		
CV-16T	138	φ16.1 ⁽¹⁾⁽²⁾	14		
CV-19T	150	φ19.2 ⁽¹⁾⁽²⁾	16		
	L	D	L1		
CVR-22	84	φ23.2 ⁽¹⁾⁽²⁾	17	136.5	
CVRH-28	113	φ28.7 ⁽¹⁾⁽²⁾	20	184	
CVRH-35	126	φ35.2 ⁽¹⁾⁽²⁾	25	197	
CVRH-42	126	φ41.5 ⁽¹⁾⁽²⁾	29	197	

Note(1) Nut is excluded from above mentioned weight. (2) Nut weight:1/4-18g,3/8-30g,1/2-33g,5/8-50g and 3/4-93g.